

# MONTHLY MEMBERSHIP PROGRESS REPORT

District 2 A1

Results as of: 3/31/2026

GMT:

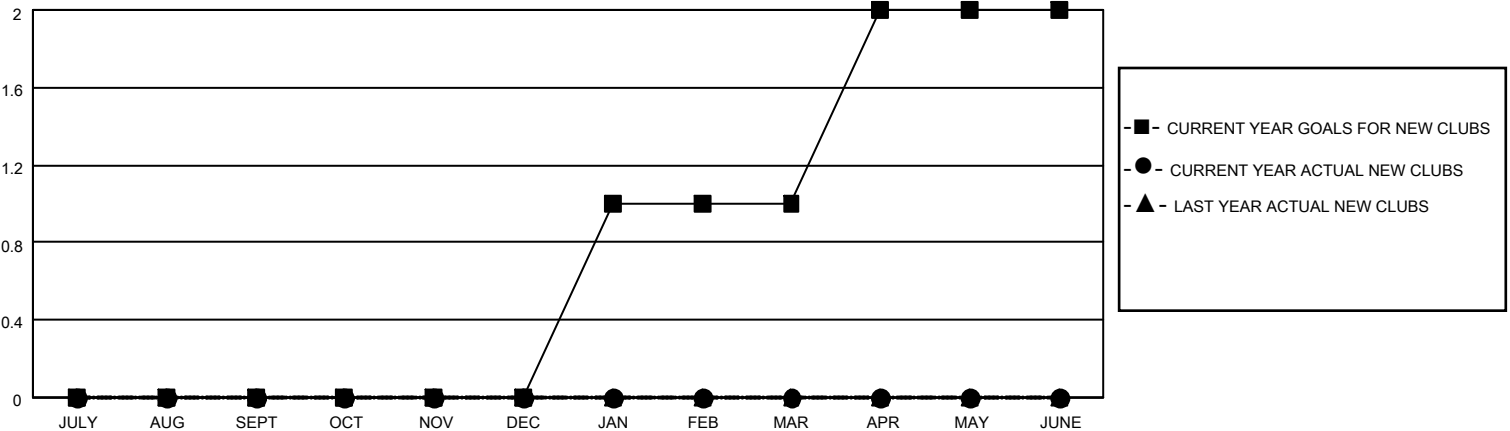
LOCATION TEXAS

GMT CA

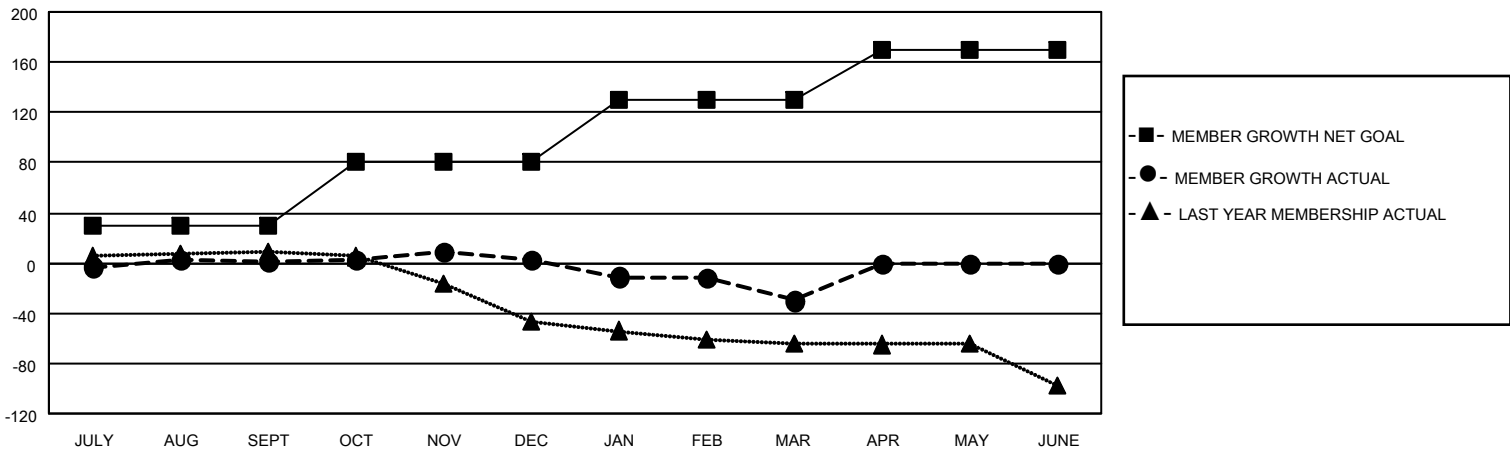
Clubs			
RESULTS FOR 2025-2026			
QUARTER	NEW CLUB GOAL	NEW CLUBS	DROPPED CLUBS
JULY/AUG/SEPT	0	0	0
OCT/NOV/DEC	0	0	0
JAN/FEB/MAR	1	0	0
APR/MAY/JUNE	1	0	0

Members			
RESULTS FOR 2025-2026			
QUARTER	MEMBER GROWTH NET GOAL	MEMBER GROWTH ACTUAL	DROPPED MEMBERS ACTUAL (including transfers)
JULY/AUG/SEPT	30	26	24
OCT/NOV/DEC	50	28	23
JAN/FEB/MAR	50	17	48
APR/MAY/JUNE	40	0	0

GOALS AND ACTUAL NEW CLUBS CUMULATIVE



GOALS AND ACTUAL MEMBERS CUMULATIVE



DROPPED CLUBS: 0	20 CLUBS OF 33 ADDED 1 OR MORE NEW MEMBERS	<b>GENDER DISTRIBUTION</b> MALE 497 (60.02%) FEMALE 331 (39.98%)
<b>DROPPED MEMBERS</b> DECEASED 11 CLUB CANCELLED 0 OTHER 84 TOTAL 95	<a href="#">CLICK HERE FOR CUMULATIVE MEMBERSHIP DATA</a>	TOTAL FAMILY UNIT MEMBERS 93 FAMILY MEMBERS PAYING HALF DUES 47